

**AGL****Applied Genetics Laboratories, Inc.****Cytogenetic Report****AGL Study #:** 13-QAPR-001**PO #:** 130001**Cell Line ID:** EU-TJ-4467**Sponsor:** Excellent University**Sample Type:** Human Stem Cell**Contact Person:** Tom Jones, PhD**Date Received:** September 1, 2013**Address:** 1000 Main Street**Date Reported:** September 10, 2013

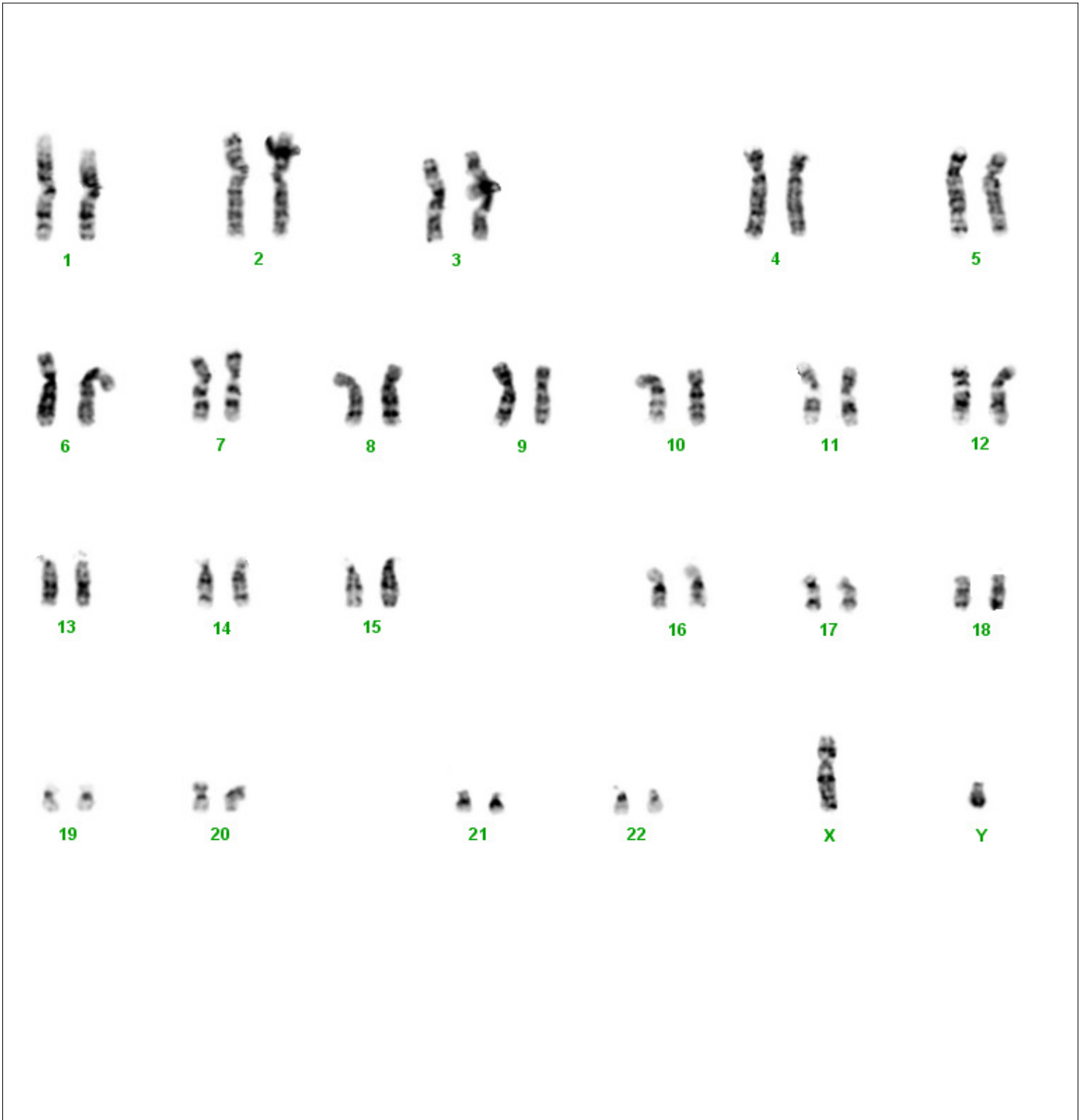
AnyCity, AnyState, USA 10000

---

**RESULTS****Karyotype:** 46,XY [20]**Interpretation:** **NORMAL** human male chromosome complement. No indication of chromosome abnormality in this cell culture.**Specimen Source:** Human iPSC #EU-TJ-4467**Cultures:** Unstimulated overnight**# of Metaphases Analyzed:** 20**# of Metaphases karyotyped (images included):** 2**Banding Method:** GTW**Resolution:** 475 bands**Comments:** Report faxed to Dr. Tom Jones, Excellent University

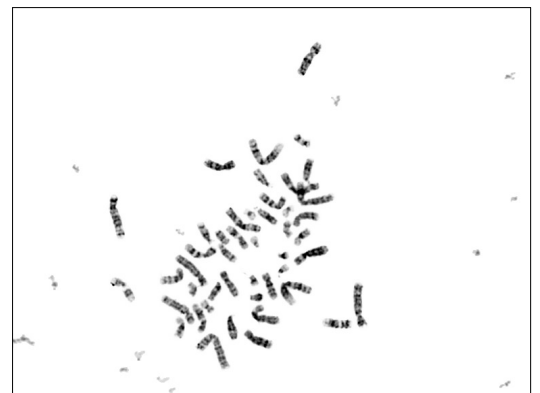
---

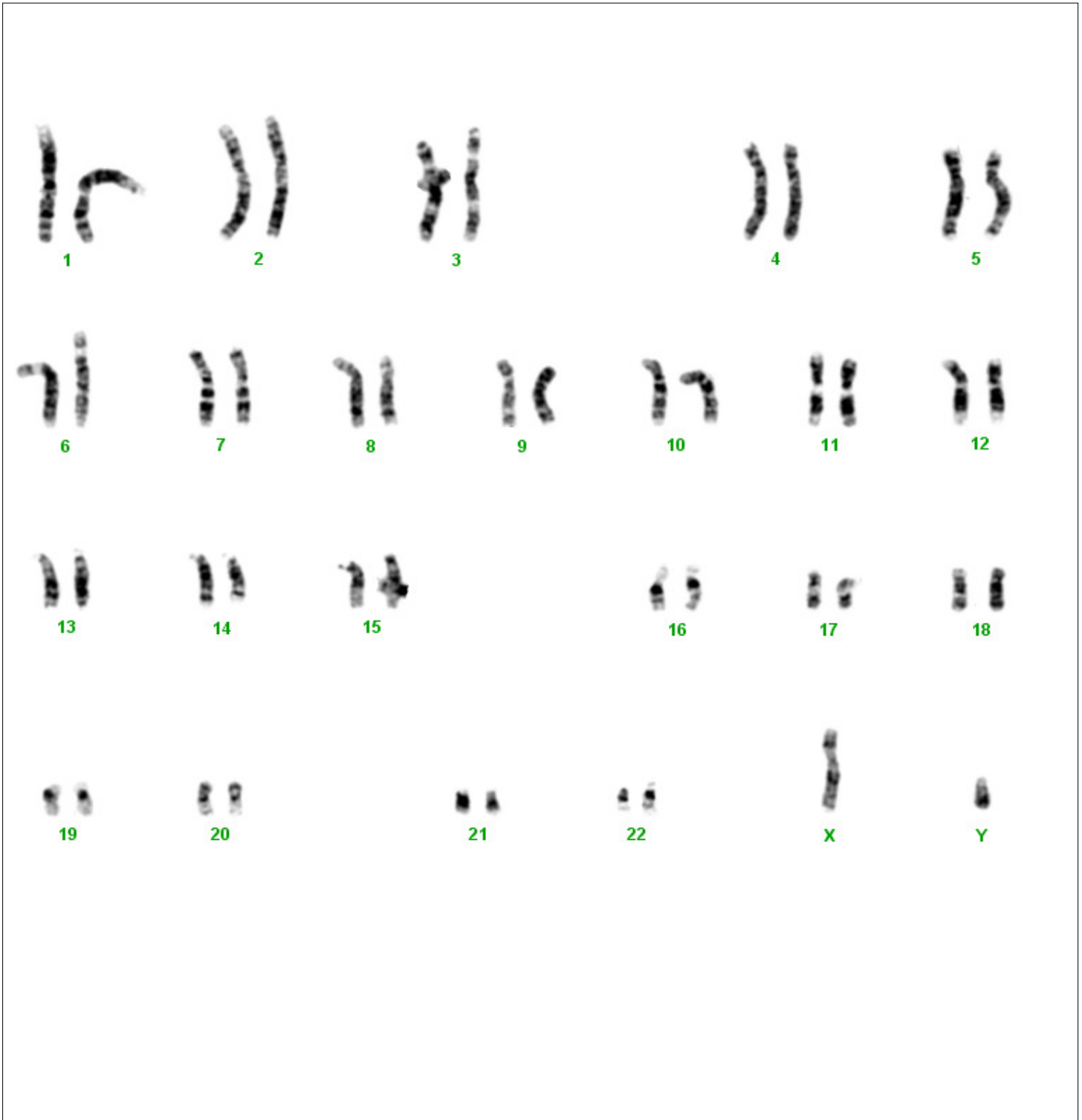
**Study Director:** Bryan Hall, MS, CG(ASCP)<sup>CM</sup> *Bryan Hall, 9/10/13***QA Review:** Lynn Silvestri *LS, 9/10/13***Reviewed by:** John Hozier, PhD, FACMG *John Hozier, 9/10/13*



Case: AGL\_Study\_No.\_13-QAPR-001 Slide: 1 Cell: 2(156.2x5.2)

Date: 9/9/2013  
Technologist: Bryan K. Hall, MS, CG(ASCP)  
Cell Line ID: EU-TJ-4467  
Karyotype: Human  
Chromosome Count: 46





Case: AGL\_Study\_No.\_13-QAPR-001 Slide: 1 Cell: 3(158.3x12.5)

Date: 9/9/2013  
Technologist: Bryan K. Hall, MS, CG(ASCP)  
Cell Line ID: EU-TJ-4467  
Karyotype: Human  
Chromosome Count: 46

